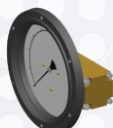


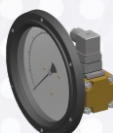


## COMBINATIONS

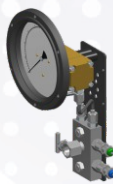
### Gauge



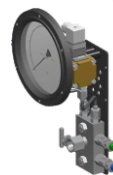
### Gauge+Switch



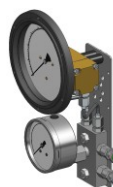
### Gauge+Manifold



### Gauge+Switch+Manifold

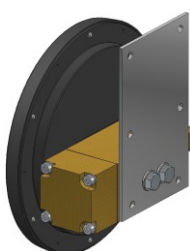


### Gauge+Pressure Gauge+Manifold

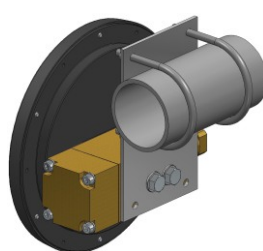


## MOUNTING BRACKETS

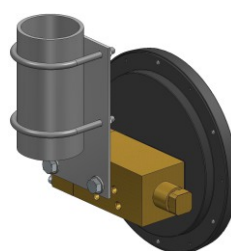
### Surface mounting



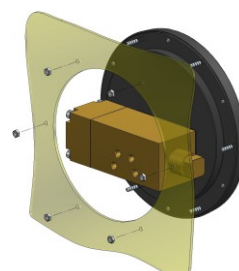
### Horizontal pipe mounting



### Vertical pipe mounting



### Panel mounting



## 370 DGC

**DP Range:** 0 to 75 upto 7000mbar  
0 to 30 upto 2800 inwc

## Specifications

Accuracy (% of FSD)	±2% (Ascending) ; 1.6% on request
Migration	No migration ; Zero leakage from high to low port
Range	0-760 upto 70,000 mmwc or equivalent ranges in other units (special ranges on request)
First marking on the scale	5% of the FSD
Sensing element	Diaphragm
Wetted parts	Diaphragm, body material, SS 302 spring & ceramic magnet
Dial Case material & dial size	Stainless steel (SS 304): 6" (Glass: Float/ Acrylic/ Safety/ Toughened) Engineering polymer: 6" (Glass: Acrylic/ Safety)
Mounting	Bayonet: 4", 6" (Glass: Safety only)
Maximum working pressure	Direct, Panel, 2" pipe & surface mounting 50 bar (725 psi)
Operating Temperature	-40°C to 80°C (-40°F to 175°F) with transmitter: -40°C to 80°C (-40°F to 175°F)
Body material	Aluminum, Brass, SS 316
Diaphragm	Buna-N, Viton™(Std), EPDM, Silicone
Window	Mentioned above in "Case material & dial size"
Connection	1/4" NPT(F), 1/4" BSP(F) (Std) and others (through adaptor)
Porting	In-line, Rear/ Back, Bottom (Std), Bottom & Vent, In-line & Vent
Manifold	Optional (3-way, 5-way)
Over range protection	Up to the max. working pressure from high and low side (50 bar)
Protection for gauge & switch	IP 66 as per IS / IEC 60529:2001 standard (NEMA 4X)

## Options

Liquid filling
Red follower pointer
Customer logo
Dual scale
Color band
Cleaned for oxygen service
Descending calibration
Also available with 3 or 4 scales



## Switches (Adjustable in 30-100% of FSD)

1 or 2 SPSTs with a DIN plug
1 or 2 SPSTs with a terminal strip
1 or 2 SPDTs with a terminal strip
1 or 2 SPDTs with a DIN plug
4-20mA output transmitter

## Can replace Barton Instruments

