



370 DGC

DP Range: 0 to 75 upto 7000 mbar
0 to 750 upto 70,000 mmH₂O

COMBINATIONS

Gauge



Gauge+Switch



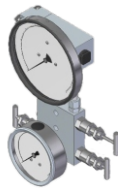
Gauge+Manifold



Gauge+Switch+Manifold

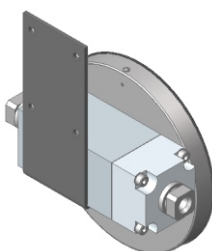


Gauge+Pressure Gauge+Manifold

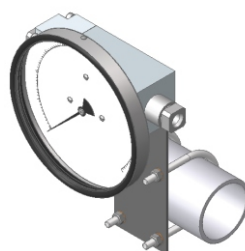


MOUNTING BRACKETS

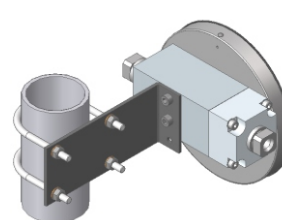
Surface mounting



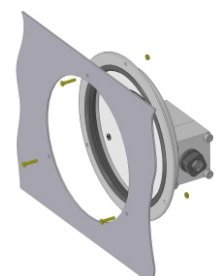
Horizontal pipe mounting



Vertical pipe mounting



Panel / Flange mounting



Specifications

Accuracy	±2% of the FSD (Ascending). 1.6% on request
Migration	No migration ; Zero leakage from high to low port
Range	0-750 to 0-70,000 mmH ₂ O or equivalent ranges in other units
First marking on the scale	15% of the FSD
Sensing element	Diaphragm
Wetted parts	Diaphragm, body material, SS 302 spring & ceramic magnet
Case material & dial size (in mm)	Stainless steel (SS 304): 80, 100, 115, 150 Engineering polymer: 115, 150 Bayonet: 100, 150
Mounting	Direct, front flange, 2" pipe & surface mounting
Maximum working pressure	75 bar / 1000 psi
Design temperature	-40°C to 80°C (-40°F to 175°F)
Body material	Aluminum, Brass, SS 316
Diaphragm	Buna-N, Viton, EPDM
Window	Float glass (Std.), toughened glass, acrylic & safety glass
Connection	1/4" NPT(F) (Std.), 1/4" BSP(F) and others (through adaptor)
Porting	In-line, bottom, top vent (others on request)
Manifold	Optional
Over range protection	Up to the max. working pressure from high side
Protection for gauge & switch	IP 65 / NEMA-4

Options

Liquid filling	1 or 2 SPSTs with a DIN plug
Red follower pointer	1 or 2 SPSTs with a terminal strip
Customer logo	1 or 2 SPSTs with a terminal strip
Dual scale	1 or 2 SPSTs with a DIN plug
Color band	
Filter mesh in (+) connection	
Descending calibration	

Switches (Adjustable in 30-100% of FSD)

1 or 2 SPSTs with a DIN plug
1 or 2 SPSTs with a terminal strip
1 or 2 SPSTs with a terminal strip
1 or 2 SPSTs with a DIN plug

Available as standard in Engineering Polymer (EP) case



- Removable glass cover
- Strong and durable
- Panel mounting possible
- Condensation can be cleaned
- Light weight